

TOP-Kart®

MINI BLUE EAGLE RT 17



MINI BLUE EAGLE RT 17

INDICE – INDEX

CARATTERISTICHE - FEATURES	PAG. 2
RICAMBI : SCOCCA, GRUPPO STERZO, PEDALI (DISEGNO 1) - CHASSIS, STEERING GROUP, PEDALS (DRAWING 1)	PAG. 3 - 6
RICAMBI : ASSALE E SUOI COMPONENTI, GRUPPO FRENATE, PEDANA (DISEGNO 2) - REAR AXLE AND ITS COMPONENTS, BRAKE SYSTEM, FLOOR PANEL (DRAWING 2)	PAG. 7 – 11
RICAMBI : PINZA FRENO (DISEGNO 2A) - BRAKE CALIPER (DRAWING 2A)	PAG. 11 - 1
RICAMBI : POMPA FRENO (DISEGNO 2B) - BRAKE PUMP (DRAWING 2B)	PAG. 13 - 1
RICAMBI : ASTA FRENO (DISEGNO 2C) - BRAKE BAR (DRAWING 2C)	PAG. 15 - 1
RICAMBI : CAVO DI SICUREZZA FRENO (DISEGNO 2D) - SAFETY BRAKE CABLE (DRAWING 2D)	PAG. 17 - 1
RICAMBI : SERBATOIO, SEDILE, SUPPORTI VARI, PARACATENA (DISEGNO 3) - FUEL TANK, SEAT, SUPPRTS, CHAIN GUARD (DRAWING 3)	PAG. 19 - 2
RICAMBI : CARENATURE, SPOILER ANTERIORE, SUPPORTI (DISEGNO 4) - FAIRINGS, FRONT SPOILER, SUPPORTS (DRAWING 4)	PAG. 23 - 2
RICAMBI : PARAURTI POSTERIORE, SUPPORTI MOTORE, CERCHI RUOTA (DISEGNO 5) - REAR BUMPER, ENGINE MOUNTS, WHEEL RIMS (DRAWING 5)	PAG. 25 – 1
RICAMBI : ADESIVI (DISEGNO 5A) – STICKERS (DRAWING 5A)	PAG. 27 - 2
RICAMBI : APPOGGIAPIEDI (DISEGNO 6) - FOOT REST (DRAWING 6)	PAG. 29 - 3
OPTIONALS	PAG. 31 - 3
ACCESSORI - ACCESSORIES	PAG. 37 - 3
INFORMAZIONI GENERALI E PREZZO TELAIO - GENERAL INFO AND CHASSIS PRICE	PAG. 39

**** LA NUMERAZIONE DEI COMPONENTI (Pos.) E' PROGRESSIVA
**** THE NUMBERING OF THE COMPONENTS (Pos.) IS PROGRESSIVE

NOTE – NOTES

.....
.....
.....
.....
.....
.....
.....
.....
.....
.....
.....
.....
.....
.....
.....
.....
.....
.....
.....

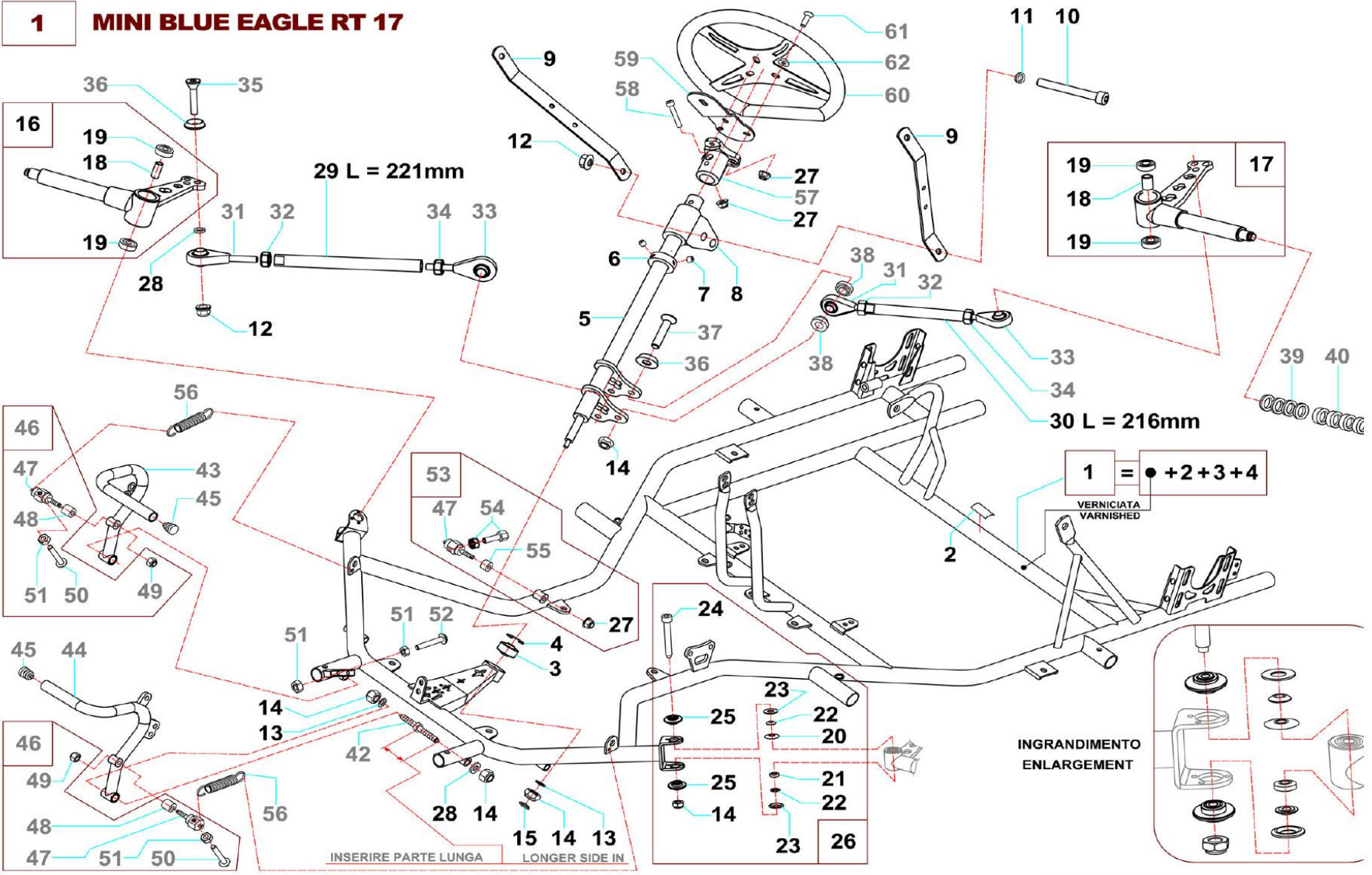


- Kart per ragazzi di età dai 9 ai 12 anni.
- Impianto frenate idraulico a disco poster. Omologaz. 04/FR/20
- Cerchi in alluminio verniciato.
- Struttura in tubi in acciaio al cromo molibdeno diametro 28 mm.
- Omologa nazionale Italiana ACI/CSAI 17/CH/14 - 01/VO/14

- Kart for kids between 9 and 12 years old.
- Hydraulic braking system with rear disc. Homolog. 04/FR/20
- Wheel rims in varnished aluminum alloy.
- Frame in chrome – molybdenum steel tubes diameter 28 mm.
- Italian homologation ACI/CSAI 17/CH/14 – 01/VO/14



1 MINI BLUE EAGLE RT 17



MINI BLUE EAGLE RT 17 (disegno 1) - (drawing 1)

os.	Cod.	Descrizione	Description	Qt.	Un. Price KRW
1	1000-069-45	Scocca MINI RT 17 W/B 950 verniciata con uniball, seeger e adesivo CSAI 17/CH/14	Varnished MINI RT 17 W/B 950 with uniball, seeger and sticker CSAI 17-CH-14	1	1,897,500
2	1000-072-95	Adesivo omologa MINI RT17	MINI RT17 homologation sticker	1	11,000
3	1000-130	Uniball piantone sterzo foro 8mm	Steering column uniball 8mm hole	1	34,000
4	1000-131	Seeger int. D.22 per uniball piantone sterzo	Seeger D.22 for steering column uniball	1	1,200
5	1000-104-06	Piantone sterzo	Steering column	1	102,400
6	1000-749-01	Anello ferma piant. sterzo allum. anod. nero	Locking ring for steering column black anod.	1	17,300
7	1000-146	Grano M6x6 estremità conica zigrinata	Headless screw M6x6 conical knurled edge	2	3,500
8	1000-122-05	Supporto in Nylon blu piant. sterzo fori D.8,5	Steering column support Nylon blu holes D.8,5	1	9,200
9	1000-121-20	Staffa porta numero	Front panel support	2	26,500
10	1000-123	Vite TCEI M8x65 zincata bianca	Screw TCEI M8x65 white galvanized	1	1,800
11	1000-152-03	Rondella piana D.8,4x15x1,5 zincata bianca	Flat washer D. 8,4x15x1,5 white galvanized	1	1,200
12	1000-015-01	Dado flangiato autobloccante M8x10,8	Self locking flanged nut M8x10,8	3	1,200
13	1000-036-04	Rondella piana D.8,4x13x1 zincata bianca	Flat washer D. 8,4x13x1 white galvanized	3	600
14	1000-015	Dado autobloccante M8x8	Self locking nut M8x8	9	1,200
15	1000-197	Anello di arresto speciale D.4	Special lock ring D. 4	1	2,300
16	1000-114-18	Fus. compl. destro vite M8 D.17x107 10,5°	Compl. right spindle wheel M8 screw D.17x107 10,5°	1	148,400
**		VEDERE OPTIONAL 1 PAG. 31/32	SEE OPTIONAL 1 PAGE 31/32		
17	1000-114-20	Fus. compl. sinistro vite M8 D.17x107 10,5°	Compl. left spindle wheel M8 screw D.17x10 10,5°	1	148,400
**		VEDERE OPTIONAL 1 PAG. 31/32	SEE OPTIONAL 1 PAGE 31/32		
18	1000-118	Distanziale cuscinetti fusello D.8,2xD.12X25,9	Spacer D.8,2xD.12x25,9 for spindle bearings	2	4,100
19	1000-117	Cuscinetto D.8xD.22x7 608 2RS	Bearing D.8xD.22x7 608 2RS	4	12,700
20	1000-118-06	Distanziale fusello D.8xD.30x2,25	Spindle spacer D.8xD.30x2,25	2	11,000
21	1000-051-02	Distanziale fusello D.8xD.20x4,2	Spindle spacer D.8xD.20x4,2	2	4,600
22	1000-118-13	Distanz. bombato D.8xD.20x4,4 - 10DBFE0801/B	Rounded spacer D.8xD.20x4,4 - 10DBFE0801/B	4	6,900
23	1000-073-04	Rondella bombata D.30x2,9 - 10RBF01/B	Rounded washer D.30x2,9 - 10RBF01/B	4	10,400
24	1000-106-06	Vite M8x97 fusello con cava seeger	M8x97 spindle nut with seeger groove	2	22,500
25	1010-FBG-35	Boccola fusello flottante fissa D.8xD.23	Not adjustable floating spindle bush D.8xD.23	4	52,900
26	1000-127-35	Kit singolo boccole flottanti fisse D.8xD.23	Single kit not adjustable floating bushes D.8xD.23	2	174,800
**		VEDERE OPTIONAL 2 PAG. 33/34	SEE OPTIONAL 2 PAGE 33/34		
27	1000-003	Dado flangiato autobloccante M6x9	Self locking flanged nut M6x9	5	1,200
28	1000-056	Rondella in ottone D.8,3xD.13,5x3	Brass washer D.8,3xD,13,5x3	4	4,100
29	1000-119-15	Braccetto sterzo destro L = 221mm	Right steering arm L = 221mm	1	24,200
30	1000-119-02	Braccetto sterzo sinistro L = 216mm	Left steering arm L = 216mm	1	24,200

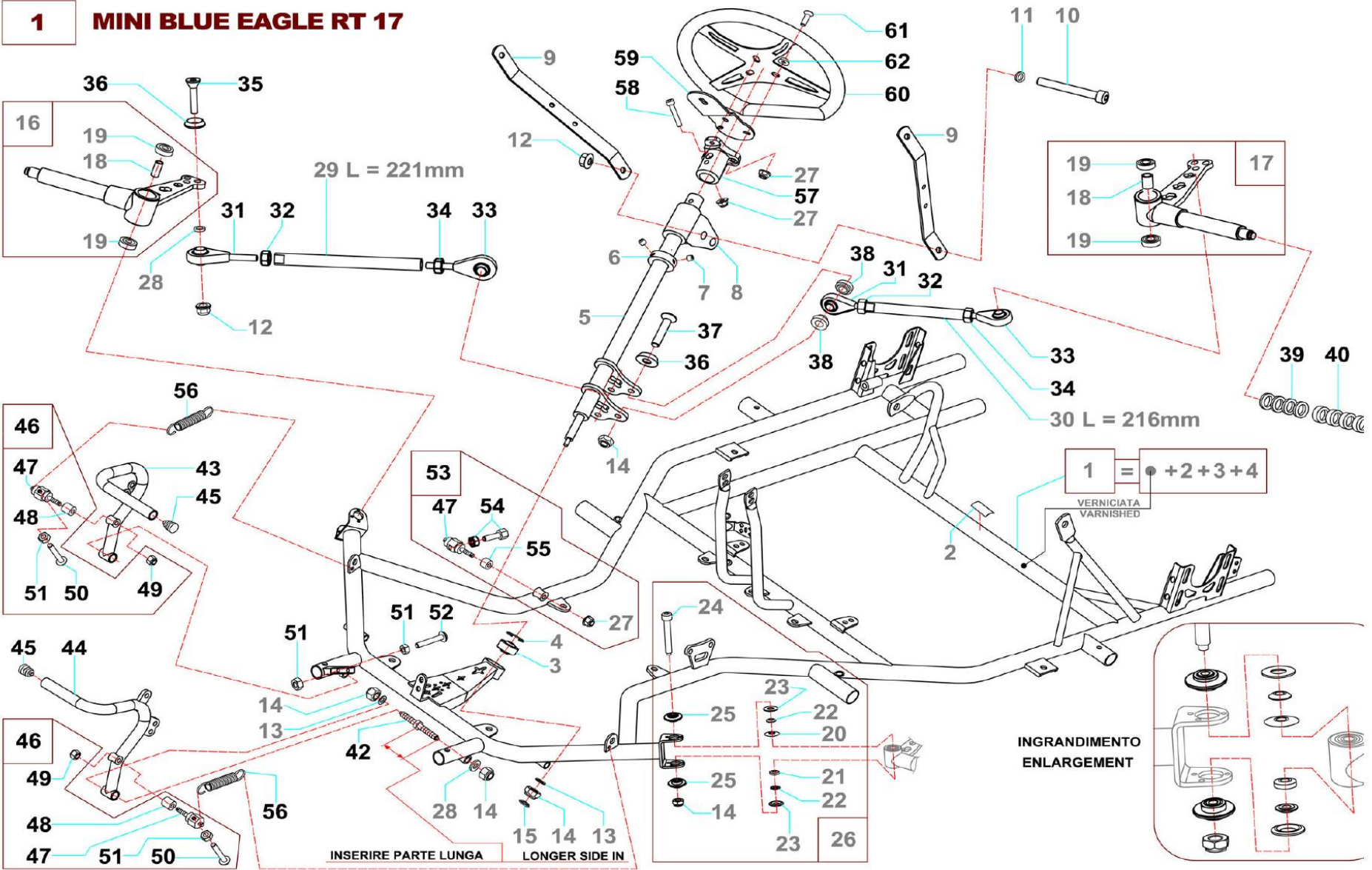
** OPTIONAL - Non fornito con il telaio/Not supplied with the chassis

continua a pag. 6

continues on pag. 6

MINI BLUE EAGLE RT 17 (disegno 1) - (drawing 1)

1 MINI BLUE EAGLE RT 17

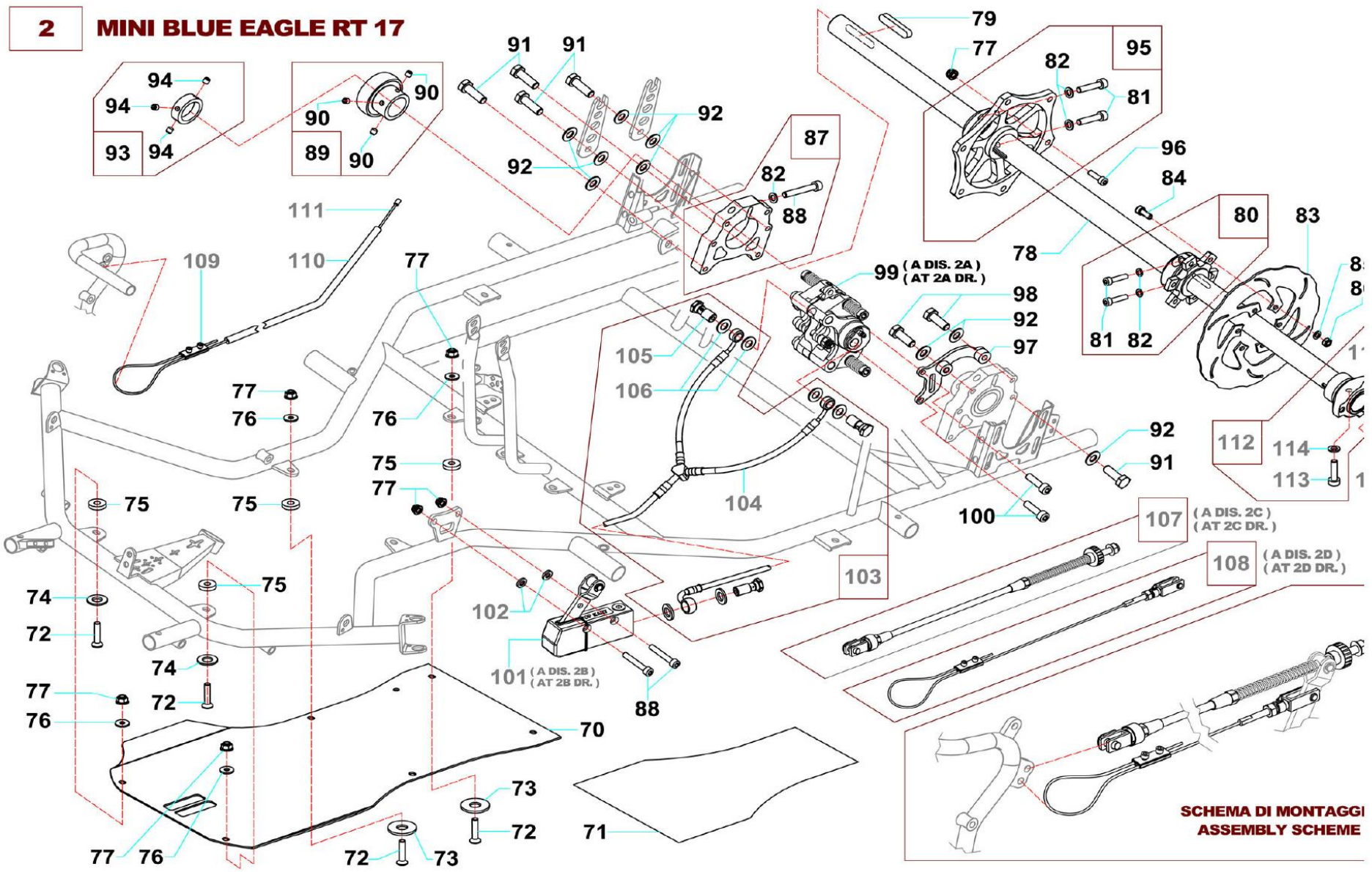


MINI BLUE EAGLE RT 17 (disegno 1) - (drawing 1)

Pos.	Cod.	Descrizione	Description	Qt.	Un. Price KRW
31	1000-125	Uniball sterzo D.8 filetto maschio M8 sinistro	D.8 steering uniball left male M8 thread	2	36,000
32	1000-128	Dado M8x8 filetto sinistro	M8x8 left thread nut	2	3,000
33	1000-110	Uniball sterzo D.8 filetto maschio M8 destro	D.8 steering uniball right male M8 thread	2	36,000
34	1000-108	Dado M8x8 filetto destro	M8x8 right thread nut	2	1,000
35	1000-141	Vite TSPEI M8x40 zincata bianca	Screw TSPEI M8x40 white galvanized	2	15,000
36	1000-078	Rondella conica svasata D.8 alluminio	Conical countersunk aluminum washer D.8	4	4,500
37	NORM-026-01	Vite TSPEI M8x50 zincata bianca	Screw TSPEI M8x50 white galvanized	2	1,500
38	1000-104-07	Bussola distanziatrice	Spacing bush	4	9,000
39	1000-112	Spessore mozzo D.17xD.24x5 in alluminio	Aluminum hub spacer D.17xD.24x5	8	4,500
40	1000-113	Spessore mozzo D.17xD.24x10 in alluminio	Aluminum hub spacer D.17xD.24x10	10	5,000
41	1000-111	Dado autobloccante M14x1,5x14	Self locking nut M14x1,5x14	2	3,000
42	1000-058-02	Prigioniero pedali M8x82	Pedals stud M8x82	2	7,500
43	1000-007-07	Pedale acceleratore	Accelerator pedal	1	73,000
44	1000-007-08	Pedale freno	Brake pedal	1	82,000
45	1000-007-99	Tappo in plastica D.11 blu	Plastic end cap D.11 blu	2	500
46	1000-057-20	Boccola registro pedale completa	Complete setting bush for pedal	2	23,000
47	1000-057-22	Registro pedale M6x30 esagono 13	Pedal register M6x30 hexagon 13	3	17,000
48	1000-057-23	Boccola in acciaio D.6,2xD.12x9 brunita	Steel bush D.6,2xD,12x9 burnished	2	7,500
49	1000-016	Dado autobloccante M6x6	Self locking nut M6x6	2	1,000
50	1000-073-03	Vite flangiata TBEI M6x30 zincata bianca	Flanged screw TBEI M6x30 white galvanized	2	1,500
51	1000-005	Dado M6x6	M6x6 nut	4	500
52	1000-073-01	Vite flangiata TBEI M6x40 zincata bianca	Flanged screw TBEI M6x40 white galvanized	1	1,500
53	1000-057-21	Boccola registro cavo acceleratore completa	Complete setting bush for throttle cable	1	23,000
54	1000-044	Vite registro cavo con dado	Cable setting screw with nut	1	5,500
55	1000-057-24	Boccola in acciaio D.6,2xD.12x6 brunita	Steel bush D.6,2xD,12x6 burnished	1	7,500
56	1000-055	Molla ritorno pedale	Return pedal spring	2	3,500
57	1000-103-09	Supporto volante incl. 15° in allum. anod. nero	15° inclined alu. steering wheel supp. black anod.	1	101,000
58	1000-120	Vite TCEI M6x35 zincata bianca	Screw TCEI M6x35 white galvanized	1	1,000
59	1000-103-06	Supporto strumentazione TOP 17	TOP 17 instruments support	1	41,000
60	1000-102-10	Volante D.330 in alcantara TOP 17 4R	Steering wheel D.330mm TOP 17 4R	1	219,000
60A**	1000-102-11	Volante D.340 in alcantara TOP 17 4R	Steering wheel D.340mm TOP 17 4R		219,000
60B**	1000-102-06	Volante D.330 in alcantara parte alta piatta	Steering wheel D.340mm flat top		179,000
61	NORM-006-05	Vite TSPEI M6x35 zincata bianca	Screw TSPEI M6x35 white galvanized	3	1,500
62	1000-002	Rondella conica svasata D.6 alluminio	Conical countersunk aluminum washer D.6	3	4,000

** OPTIONAL - Non fornito con il telaio/Not supplied with the chassis

2 MINI BLUE EAGLE RT 17



MINI BLUE EAGLE RT 17 (disegno 2) - (drawing 2)

Pos.	Cod.	Descrizione	Description	Qt.	Un. Price KRW
70	1000-063-30	Pedana MINI senza adesivi	Floor panel MINI without stickers	1	99,000
71	1000-072-10	Adesivo pedana TOP 17 universale	Universal floor panel sticker TOP 17	1	103,000
72	1000-101	Vite TSPEI M6x25 zincata bianca	Screw TSPEI M6x25 white galvanized	6	1,000
73	1000-031-01	Rondella piana D.10,5xD.30x2,5 zinc. bianca	Flat washer D.10,5x30x2,5 white galvanized	4	1,000
74	1000-021-04	Rondella piana D.10,5xD.18x2 zincata bianca	Flat washer D.10,5x18x2 white galvanized	2	1,000
75	1000-061	Rondella piana in gomma D.5,7xD.20x4 blu	Flat rubber washer D.5,7xD.20x4 blu	6	1,000
76	1000-062	Rondella piana D.6,5x18x2 zincata bianca	Flat washer D. 6,5x18x2 white galvanized	6	1,000
77	1000-003	Dado flangiato autobloccante M6x9	Self locking flanged nut M6x9	11	1,000
78	1000-138-18	Assale D.30x5x950 BLU - MEDIO	Rear axle D.30x5x950 BLU - MEDIUM	1	221,000
78A**	1000-138-19	Assale D.30x5x950 BIANCO - MORBIDO	Rear axle D.30x5x950 WHITE - SOFT		221,000
78B**	1000-138-23	Assale D.30x5x950 VERDE - DURO	Rear axle D.30x5x950 GREEN - HARD		221,000
79	1000-136-01	Chiavetta 6x5x60	Key 6x5x60	4	7,500
80	1000-137-18	Mozzo porta disco evolution D.30 compl. nero e mach.	Complete evolution disc hub D.30 black and marked	1	101,000
81	1000-004-01	Vite TCEI M6x30 brunita	Screw TCEI M6x30 burnished	4	1,000
82	1000-150-01	Rondella piana D.6,5xD.10x1,5 zincata bianca	Flat washer D.6,5xD.10x1,5 white galvanized	6	500
83	1000-148-23	Disco freno D.181x3 6 viti	Brake disc D.181x3 6 screws	1	113,000
84	NORM-037	Vite TCEI M6x16 brunita	Screw TCEI M6x16 burnished	6	1,000
85	1000-133	Rondella ondulata D.6xD.12x0,5	Wave washer D.6xD.12x0,5	6	1,000
86	1000-158	Dado autobloccante M6x6 metal block	Self locking nut M6x6 metal block	6	1,000
87	1000-139-16	Flangia D.int.62 completa TOP 17 anod. nera	TOP 17 compl. flange int. D.62 black anod.	2	99,000
88	1000-049	Vite TCEI M6x40 zincata bianca	Screw M6x40 white galvanized	4	1,000
89	1000-135-02	Cuscinetto assale D.30xD.62x30 C4	Axle bearing D.30xD.62x30 C4	2	51,000
90	1000-135-09	Grano M6x0,75x6 estremità conica zigrinata	Headless screw M6x0,75x6 conical knurled edge	6	7,500
91	NORM-054	Vite TE M8x25 zincata bianca	Screw TE M8x25 white galvanized	8	1,000
92	1000-078-01	Rondella piana D.8xD.18x3 zincata bianca	Flat washer D.8xD.18x3 white galvanized	12	1,000
93	1000-134-01	Anello di sicurezza D.30xD.40x9 zinc. bia. compl.	Compl. safety ring D.30xD.40x9 white galvanized	2	29,500
94	1000-146	Grano M6x6 estremità conica zigrinata	Headless screw M6x6 conical knurled edge	6	3,000
95	1000-151-07	Mozzo portac. compl. D.30 nero e marchiato	Compl. rear sprocket hub.D.30 black and marked	1	117,000
96	NORM-098-01	Vite TCEI M6x20 brunita	Screw TCEI M6x20 burnished	3	15,000
97	1000-502-12	Supporto pinza freno	Brake caliper support	1	102,000
98	1000-140-01	Vite TE M8x40 zincata bianca	Screw TE M8x40 white galvanized	2	2,500
99	1000-180-02	Pinza freno post. Idraul. compl. ACI 04/FR/20	Complete rear hydraulic brake caliper ACI 04/FR/20	1	362,000
100	1000-152-01	Vite TCEI M8x20 zincata bianca	Screw TCEI M8x20 white galvanized	2	1,500

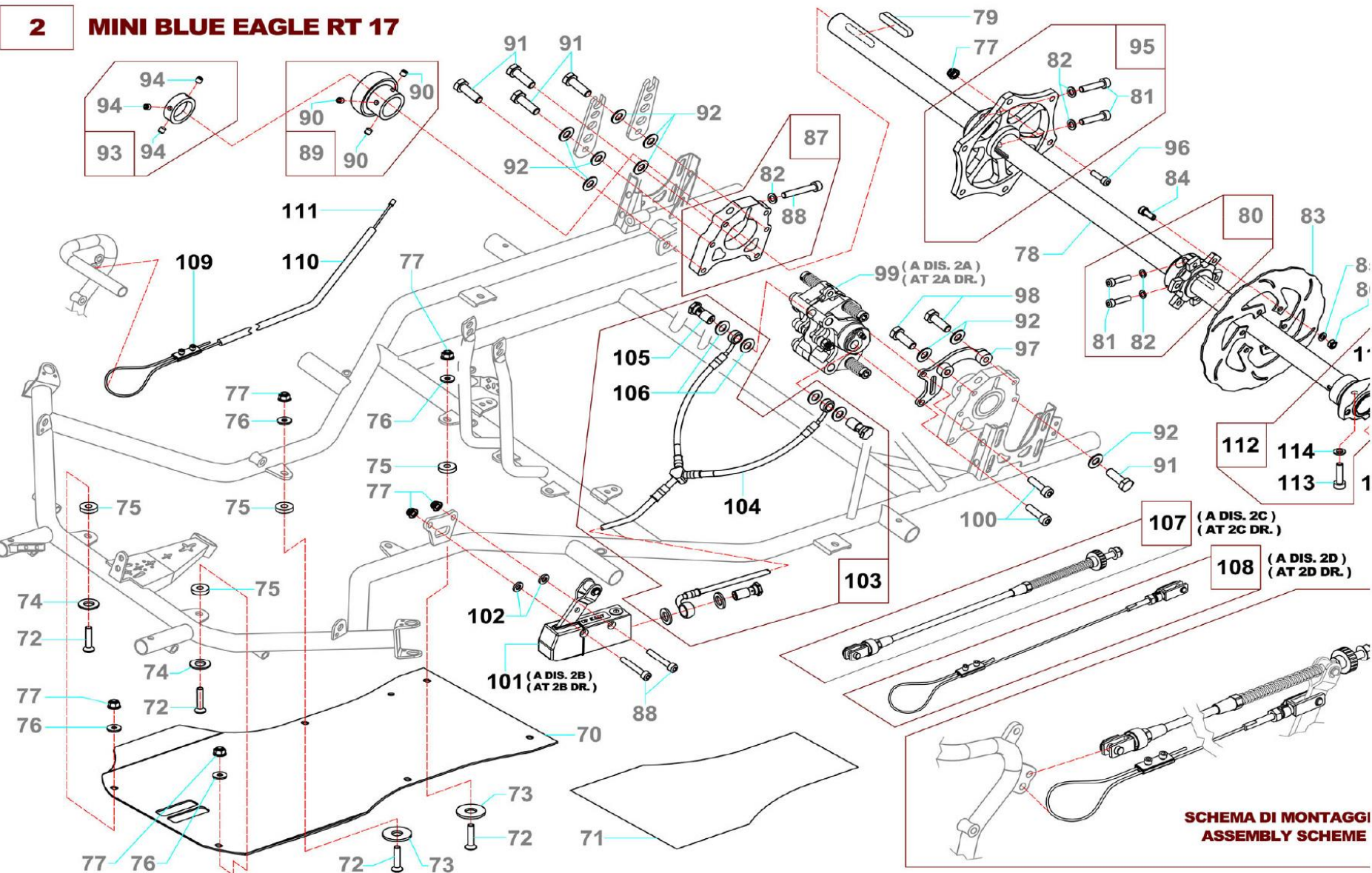
** OPTIONAL - Non fornito con il telaio/Not supplied with the chassis

continua a pag. 10

continues on pag. 10

MINI BLUE EAGLE RT 17 (disegno 2) - (drawing 2)

2 MINI BLUE EAGLE RT 17



SCHEMA DI MONTAGGI
ASSEMBLY SCHEME

TOP-Kart

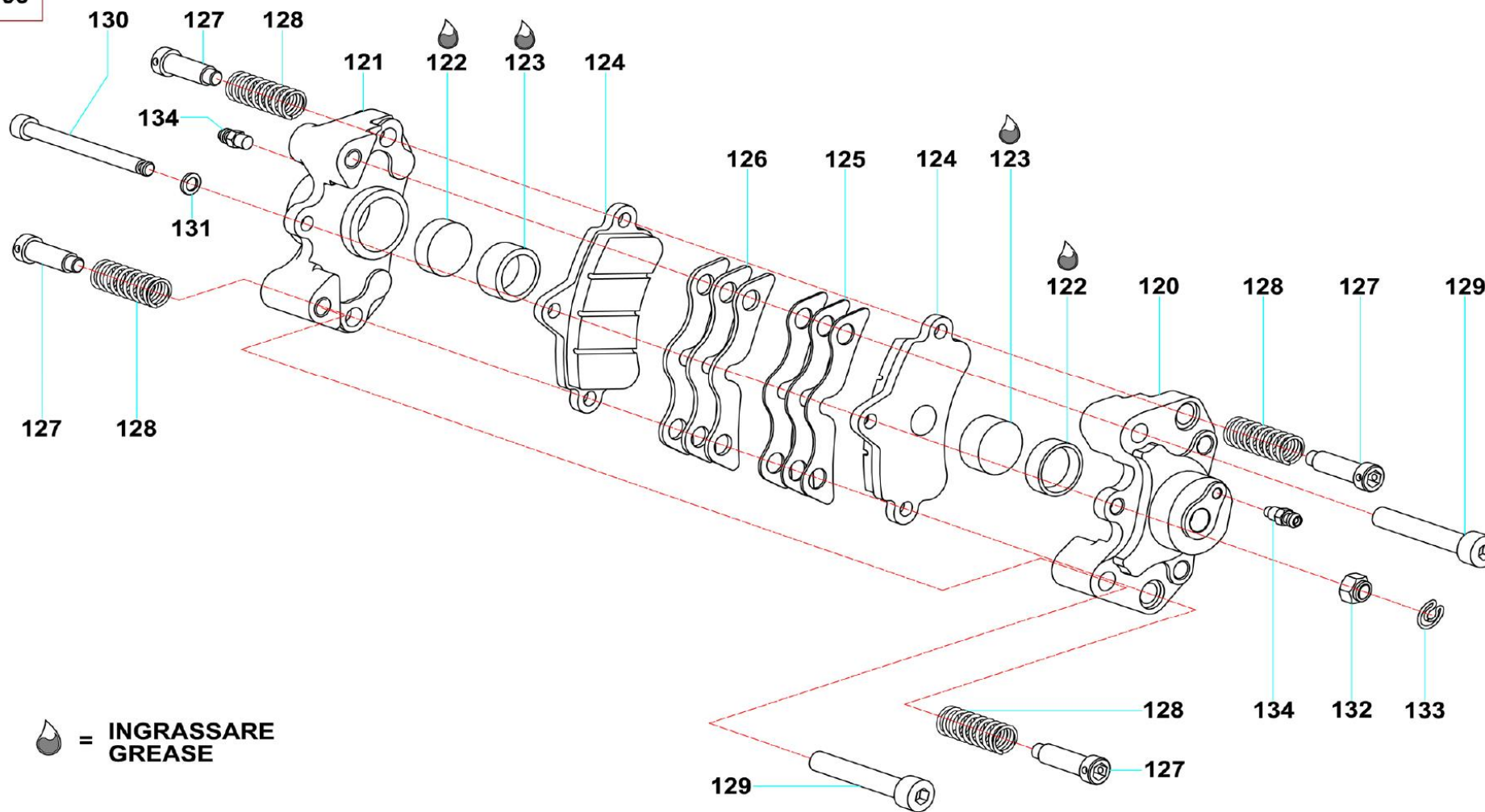
MINI BLUE EAGLE RT 17 (disegno 2) - (drawing 2)

Pos.	Cod.	Descrizione	Description	Qt.	Un. Price KRW
101	1000-190-01	Pompa freno idraulica completa ACI 04/FR/20	Complete hydraulic brake pump ACI 04/FR/20	1	197,000
102	KMIK-002	Rondella in ottone D.6,3xD.13,5x3	Brass washer D.6,3x13,5x3	2	3,500
103	1000-212-16	Tubo freno completo	Complete brake pipe	1	128,000
104	1000-212-18	Tubo freno nudo ACI 04/FR/20	Brake pipe only ACI 04/FR/20	1	116,000
105	1000-814-01	Raccordo maschio ch.13 1/8" gas	Male junction 1/8" gas hex. 13	3	8,000
106	1000-814-02	Guarnizione per tubo freno	Gasket for brake pipe	6	1,000
107	1000-230-09	Asta freno completa L = 360mm	Complete brake bar L = 360mm	1	64,000
108	1000-211	Cavo sicurezza freno completo	Complete safety cable	1	28,000
109	1000-008-01	Morsetto per cavo	Clamp for cable	1	6,500
110	1000-043-01	Guaina cavo acceler. D.5,3 L = 720mm nera	Acceler. cable sheath D.5,3 L = 720mm black	1	4,500
111	1000-042	Cavo acceleratore millefili L = 1600mm	Accelerator cable L = 1600mm	1	7,500
112	1000-143-16	Mozzo post. ruota D.30X35 compl. nero e march.	Complete rear wheel hub D.30X35 black and marked	2	85,000
112A**	1000-143-18	Mozzo post. ruota D.30X50 compl. nero e march.	Complete rear wheel hub D.30X50 black and marked		85,000
112B**	1000-143-02	Mozzo post. ruota D.30X70 compl. nero e march.	Complete rear wheel hub D.30X70 black and marked		85,000
113	1000-036	Vite TCEI M8x30 brunita	Screw TCEI M8x30 burnished	2	1,000
114	1000-036-04	Rondella piana D.8,4x13x1 zincata bianca	Flat washer D. 8,4x13x1 white galvanized	2	500
115	1000-152	Prigioniero ruote M8x37	Wheel stud M8x37	6	3,000
116	1000-015-01	Dado flangiato autobloccante M8x10,8	Self locking flanged nut M8x10,8	6	1,000

** OPTIONAL - Non fornito con il telaio/Not supplied with the chassis

2A MINI BLUE EAGLE RT 17

99



MINI BLUE EAGLE RT 17 (disegno 2A) - (drawing 2A)

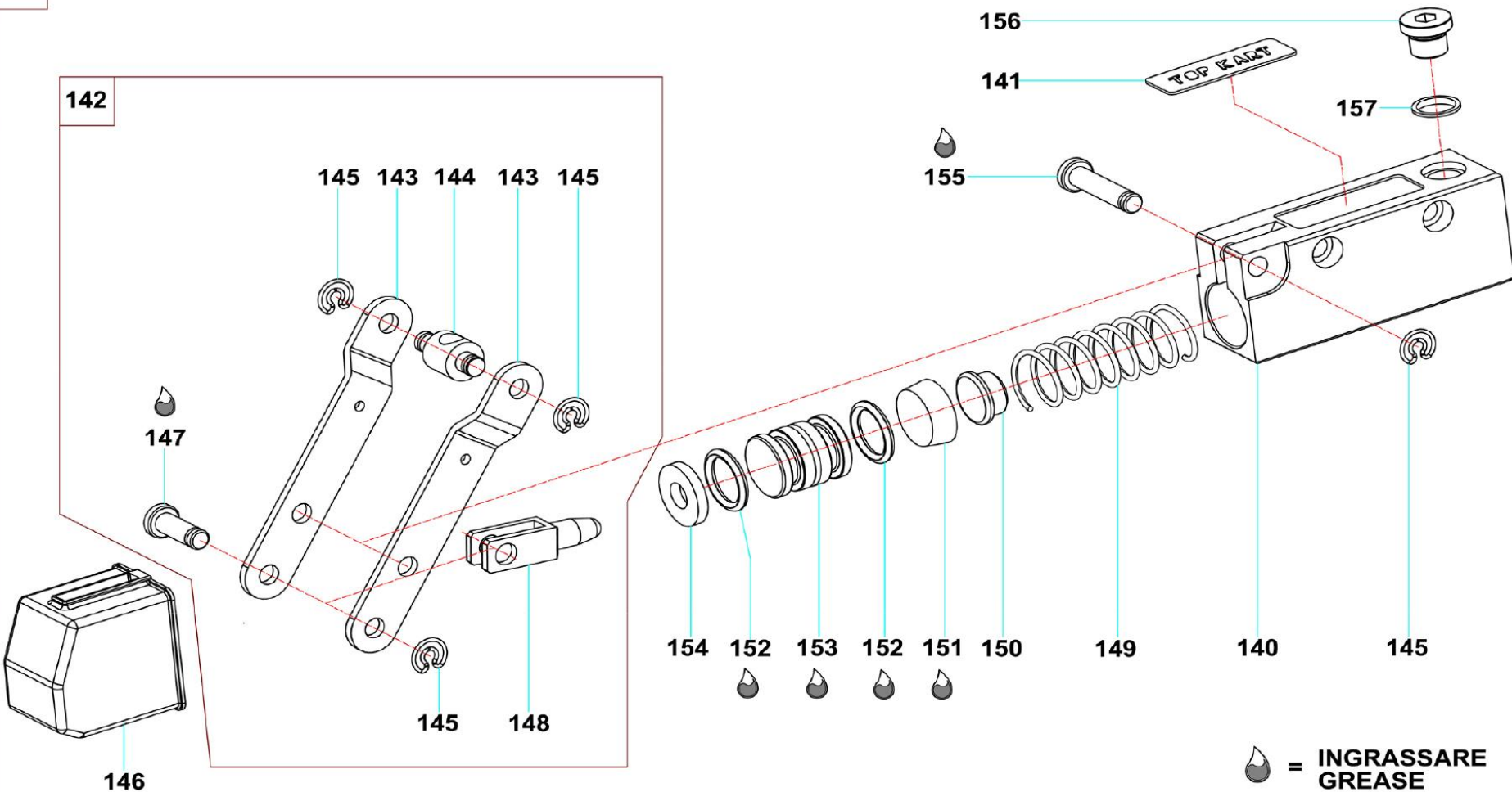
Pos.	Cod.	Descrizione	Description	Qt.	Un. Price KRW
120	1000-183-13	Corpo pinza freno lato esterno	External brake caliper body	1	108,100
121	1000-183-12	Corpo pinza freno lato interno	Internal brake caliper body	1	108,100
122	1000-204	Gommino a tazza D.22x7,5	Cup rubber D.22x7,5	2	15,600
123	1000-163-03	Pistoncino D.22x12	Brake piston D.22x12	2	19,600
124	1000-164-04	Pastiglia freno tipo NERO dura	Brake pad BLACK type hard	1	44,900
124A**	1000-164-07	Pastiglia freno tipo BLU morbida	Brake pad BLU type soft		52,900
125	1000-162-02	Distanziale pinza freno sp. 1mm	Brake caliper spacer 1mm thickness	3	6,400
126	1000-162-07	Distanziale pinza freno sp. 1,5mm	Brake caliper spacer 1,5mm thickness	3	6,400
127	1000-168	Vite per pastiglia freno M6x31,5 zincata bianca	Brake pad screw M6x31,5 white galvanized	4	5,800
128	1000-167	Molla Di.8,4x24 zincata bianca	Spring Di.8,4x24 white galvanized	4	4,100
129	NORM-030-01	Vite TCEI M8x40 zincata bianca	Screw TCEI M8x40 white galvanized	2	1,200
130	1000-864-02	Vite di sicurezza pastiglie M6x62 zinc. bianca	Brake pad safety screw M6x62 white galvan.	1	9,800
131	NORM-038	Rondella piana D.6,5xD.12x1,6 zincata bianca	Flat washer D.6,5xD.12x1,6 white galvanized	1	1,200
132	1000-158	Dado autobloccante M6x6 metal block	Self locking nut M6x6 metal block	1	1,200
133	1000-197	Anello di arresto speciale D.4	Special lock ring D. 4	1	2,300
134	1000-815-01	Raccordo spurgo freni	Bleeding screw	2	11,500

**** OPTIONAL - Non fornito con il telaio/Not supplied with the chassis**

2B MINI BLUE EAGLE RT 17

101

142



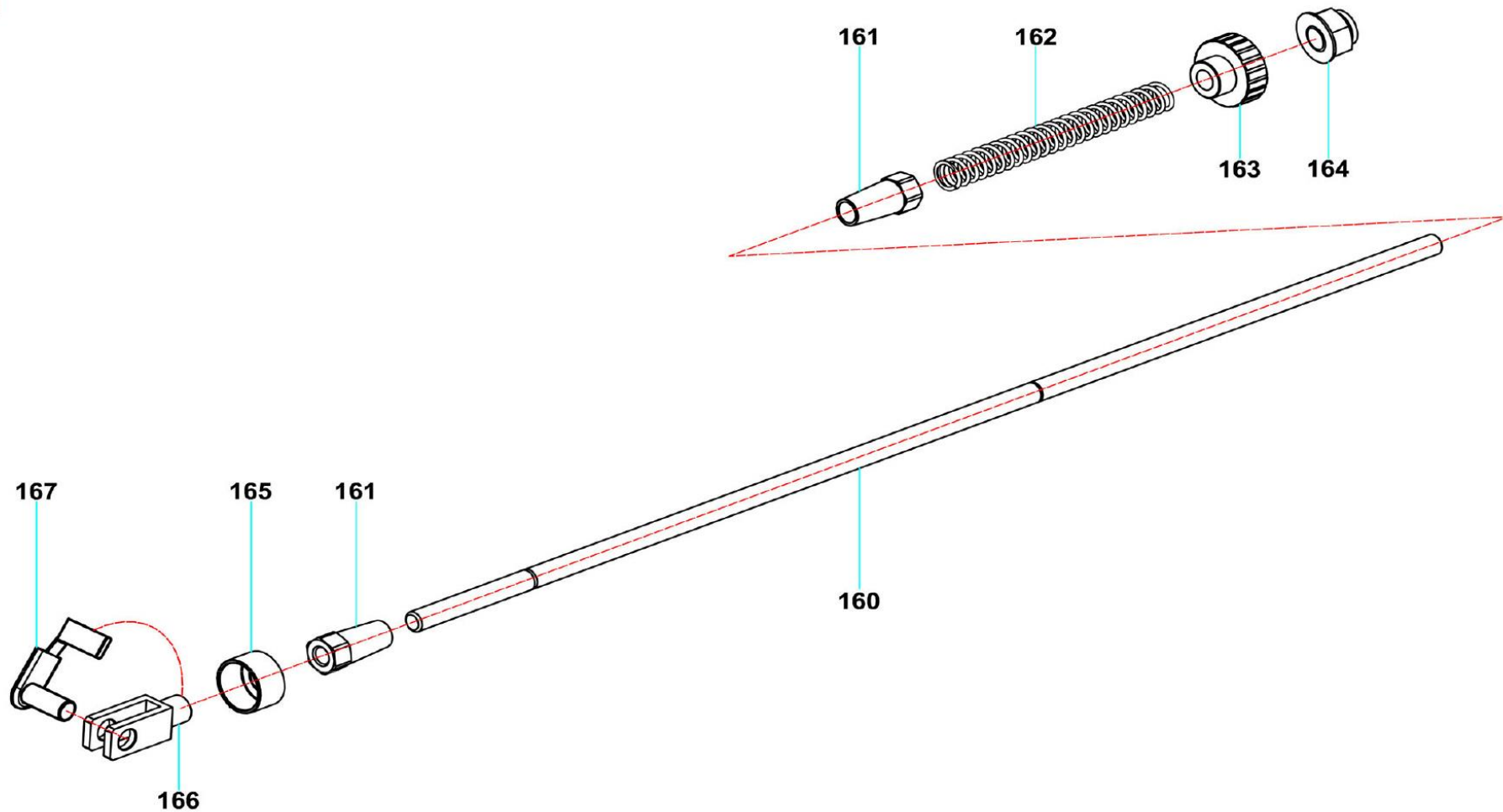
 = INGRASSARE GREASE

MINI BLUE EAGLE RT 17 (disegno 2B) - (drawing 2B)

Pos.	Cod.	Descrizione	Description	Qt.	Un. Price KRW
140	1000-206	Corpo pompa freno idraulico	Hydraulic brake body pump	1	115,000
141	1000-217	Adesivo TOP KART a lente 39,5x9,5	Lens TOP KART sticker 39,5x9,5	1	3,000
142	1000-195-01	Leva pompa freno completa	Complete brake pump lever	1	22,000
143	1000-195-02	Leva pompa freno destra e sinistra	Right and left brake pump lever	2	11,000
144	1000-195-04	Perno di unione leva	Lever joint pin	1	6,500
145	1000-197	Anello di arresto speciale D.4	Special lock ring D. 4	4	2,000
146	1000-210-01	Cuffia in gomma rossa protezione pompa	Red rubber pump protection cover	1	22,000
147	1000-201	Spina fulcro forchetta D.6x13	Fork pin D.6x13	1	4,000
148	1000-200	Forchetta con puntale L=20	Fork with L=20 tip	1	11,000
149	1000-205-03	Molla ritorno conica L=51	Conical return spring L=51	1	4,000
150	1000-205-01	Tappo guida molla	Spring guide	1	3,500
151	1000-204-14	Gommino a tazza D.19x7	Cup rubber D.19x7	1	13,000
152	1000-189-03	OR. D.i.13x2,5	OR. D.i.13x2,5	2	6,500
153	1000-203-05	Pistoncino pompa D.19x22	Pump piston D.19x22	1	23,000
154	1000-202	Gommino parapolvere	Dust protection rubber	1	3,000
155	1000-196	Spina fulcro leva D.6x27	Lever pin D.6x27	1	5,000
156	1000-198	Tappo M10x1	Cap M10x1	1	6,500
157	1000-199	Guarnizione in allum. D.10xD.14x1,5	Alumin. Gasket D.10xD.14x1,5	1	1,000

2C MINI BLUE EAGLE RT 17

107

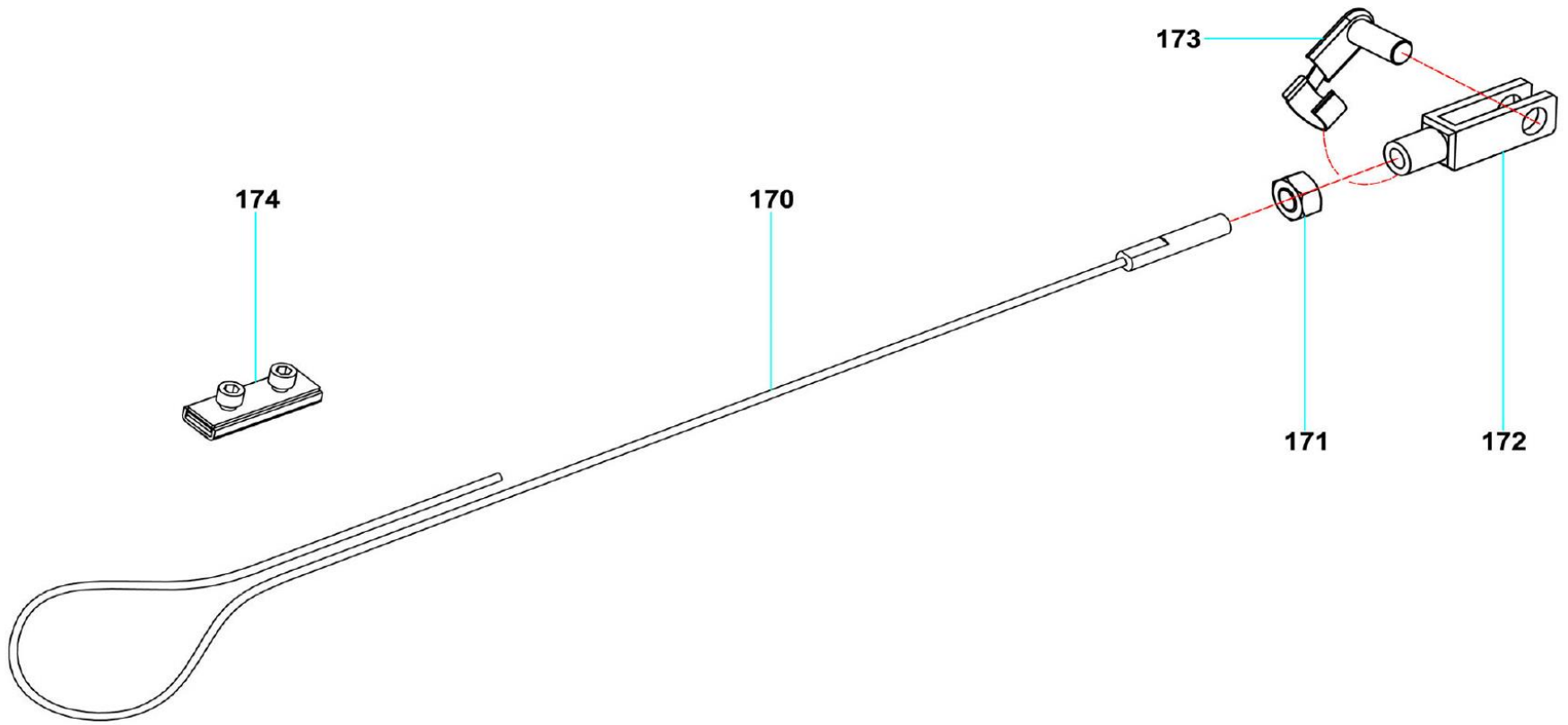


MINI BLUE EAGLE RT 17 (disegno 2C) - (drawing 2C)

Pos.	Cod.	Descrizione	Description	Qt.	Un. Price KRW
160	1000-229-06	Asta freno L = 360mm	Brake bar L = 360mm	1	18,500
161	1000-219	Dado asta freno M6x22 zincato bianco	Brake bar nut M6x22 white galvanized	2	6,000
162	S080-082	Molla D.6,7xD.9x85 zincata bianca	Spring D.6,7xD.9x85 white galvanized	1	4,000
163	1000-195-03	Registro asta freno	Brake bar adjuster	1	17,000
164	1000-003	Dado flangiato autobloccante M6x9	Self locking flanged nut M6x9	1	1,000
165	1000-220	Boccola di sicurezza	Safety bush	1	4,000
166	1000-222	Forcella D.6x12	Fork D.6x12	1	10,000
167	1000-221	Clip per forcella D.6x12	Fork clip D.6x12	1	6,000

2D MINI BLUE EAGLE RT 17

108



MINI BLUE EAGLE RT 17 (disegno 2D) - (drawing 2D)

Pos.	Cod.	Descrizione	Description	Qt.	Un. Price KRW
170	1000-194	Cavo sicurezza D.1,9x590 con filetto M5x30	Safety cable D.1,9x590 with thread M5x30	1	8,000
171	1000-193	Dado esagonale M5x5	Exhagonal nut M5x5	1	1,000
172	1000-192	Forcella D.5x20	Fork D.5x20	1	7,000
173	1000-191	Clip per forcella D.5x20	Fork clip D.5x20	1	5,500
174	1000-008-01	Morsetto per cavo	Clamp for cable	1	6,500

3 MINI BLUE EAGLE RT 17

