

TECHNICAL FILE

Trademark:

Comer[®]

Type: *W60*

Manufacturer: **COMER SpA**

42011 Bagnolo in Piano (RE) ITALY



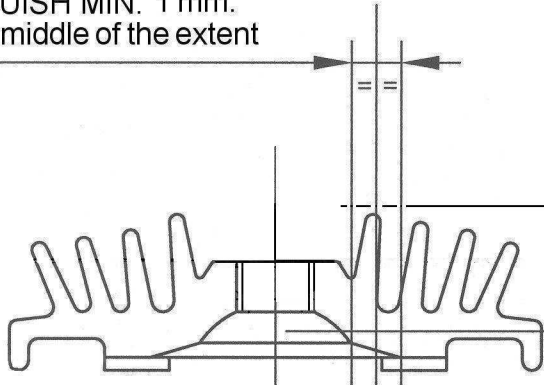
FACTORY ORIGINAL PARTS ONLY ADMITED
ANY MATERIAL REMOVAL OR POLISHING IS FORBIDDEN
THE ENGINE MUST BE ORIGINAL

TECHNICAL INFORMATION

BORE	47	Fuel	- Mix. 5%
		Ignition	- Electronic
			"SELETTA"
STROKE	35	Clutch	- Centrifugal single piece
		Drive	- Sprocket T.11-12
CAPACITY	61 cc.	Carburettor	- Tillotson HL 166
		Cylinder	- NICASIL

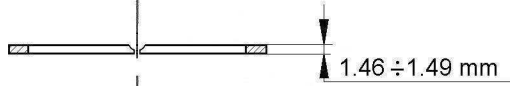
STAMP AND SIGNATURE
(National Sporting Authority)

SQUISH MIN. 1 mm.
in the middle of the extent

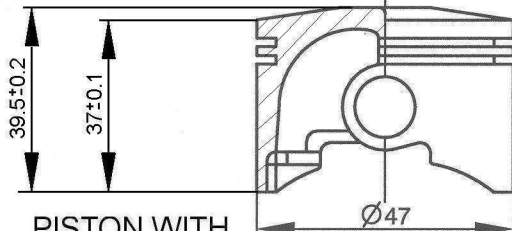
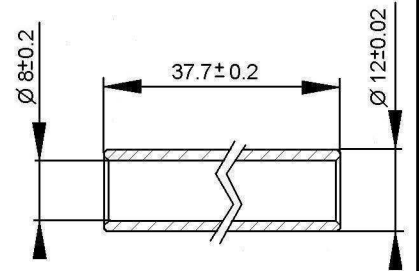


COMBUSTION CHAMBER
VOLUME 6 cm³ MINIMUM
measured on the spark plug surface
using Shell oil Advance M mixed with fuel 50 %

PISTON RING

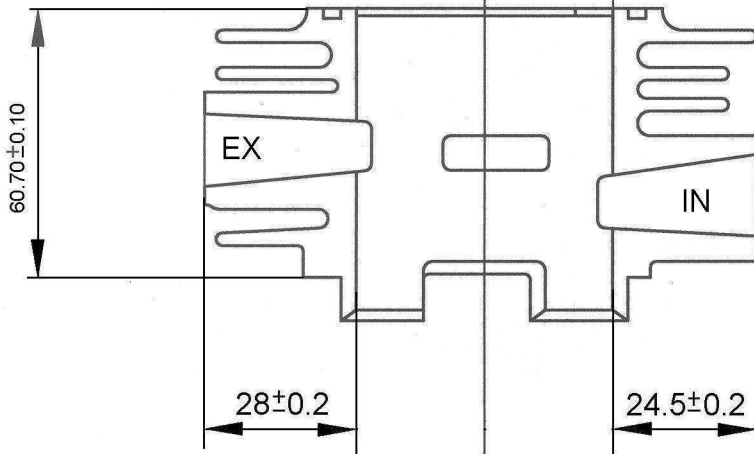


PISTON PIN



PISTON WITH
TWO RINGS

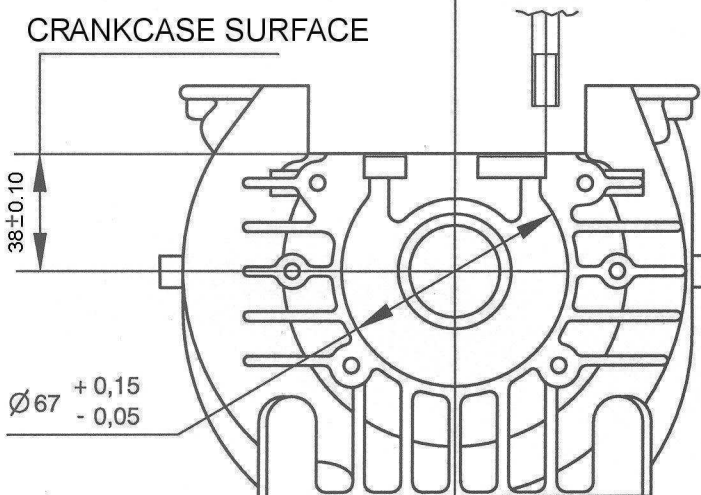
A	- 0,005
B	- 0,015
C	- 0,025
D	- 0,035
E	- 0,045



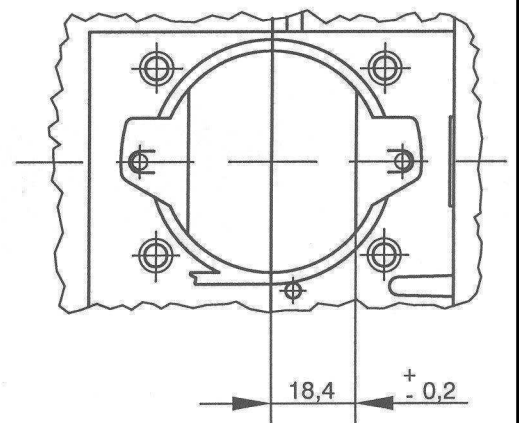
CYLINDER

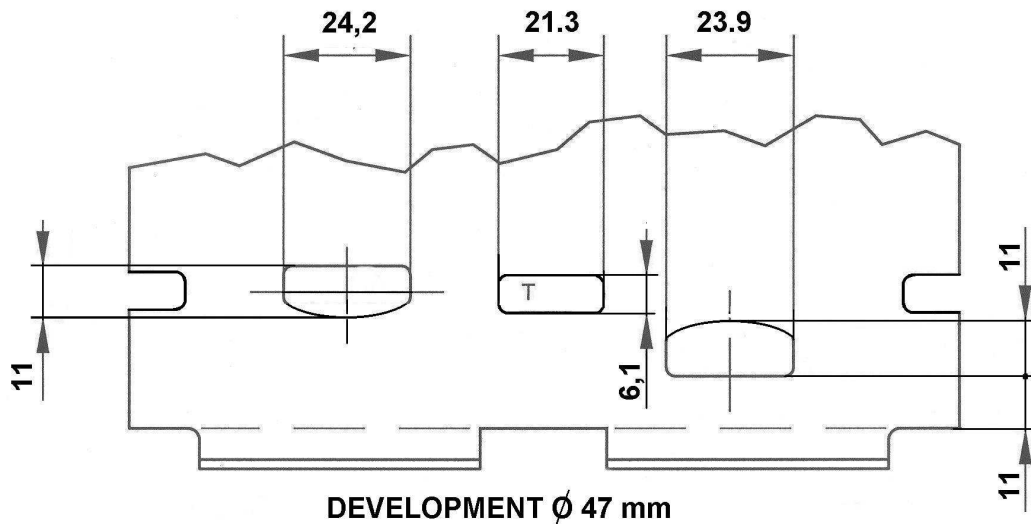
A	47,055 ÷ 47,064
B	47,045 ÷ 47,054
C	47,035 ÷ 47,044
D	47,025 ÷ 47,034

CRANKCASE SURFACE



CRANKCASE SURFACE



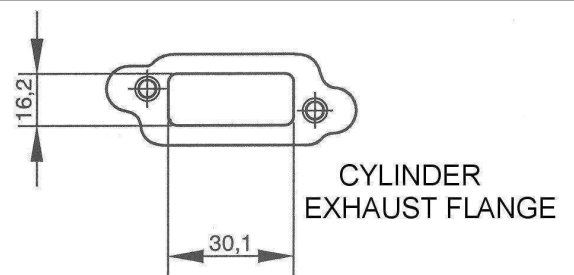
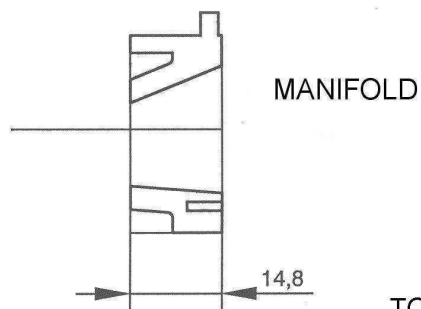
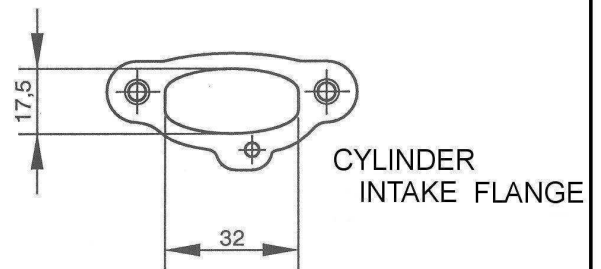
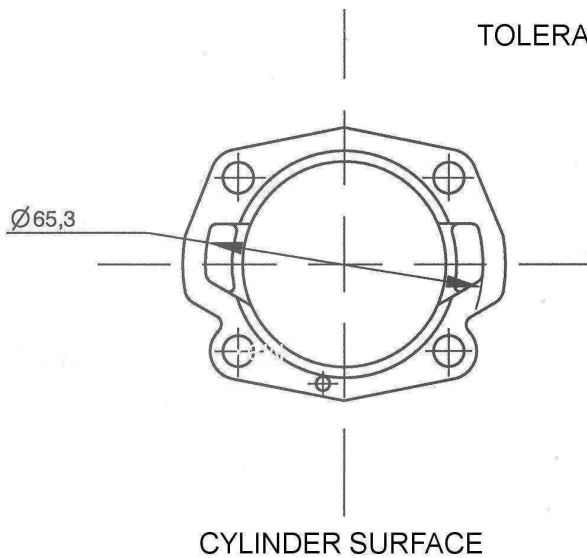


TOLERANCES \pm 0.30 mm

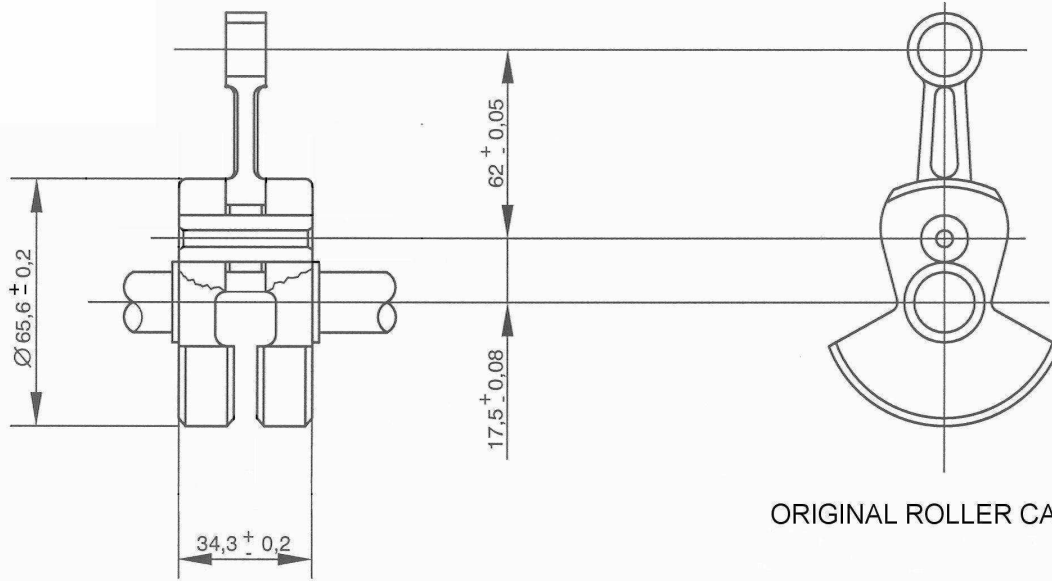
Max. INTAKE	129°
Max. EXHAUST	152°
Max. TRANSFER	119°

ALL MEASUREMENTS DONE
WITH 0,2 FEELER GAUGE WIDE 8 mm

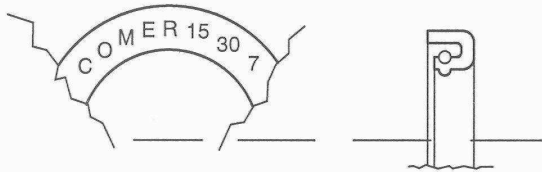
TOLERANCES \pm 0.30 mm



TOLERANCES \pm 0.30 mm

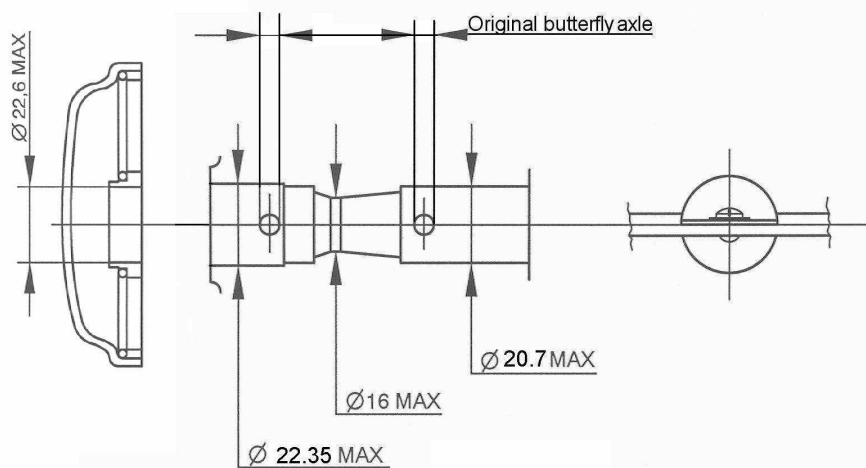


ORIGINAL ROLLER CAGES

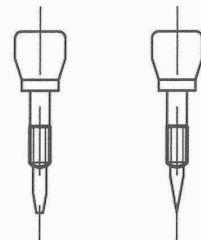


ORIGINAL OIL SEALS WITH SPRING
8 BALLS BEARING WITH IRON CAGE

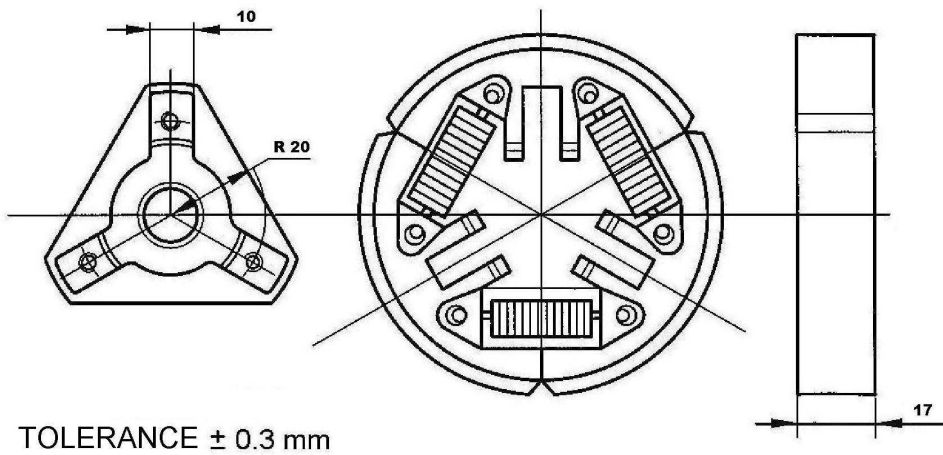
ORIGINAL CARBURETTOR "TILLOTSON HL 166"
max. Venturi \varnothing 16 mm.



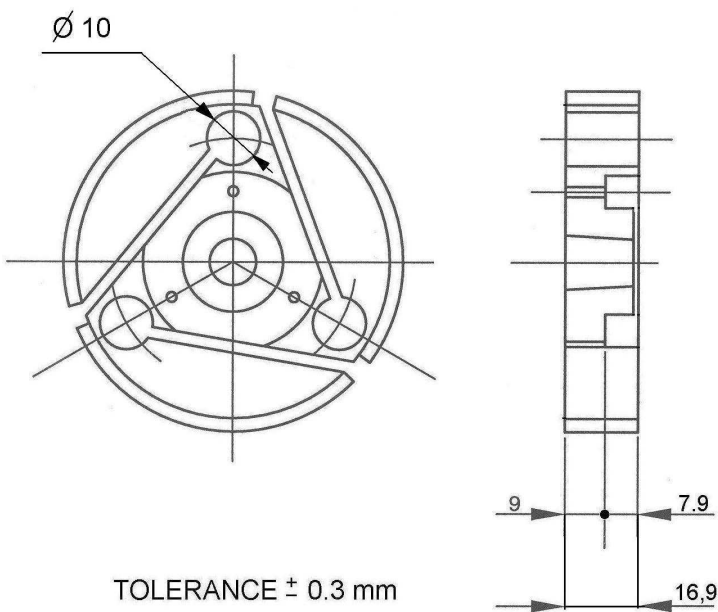
OPTIONAL



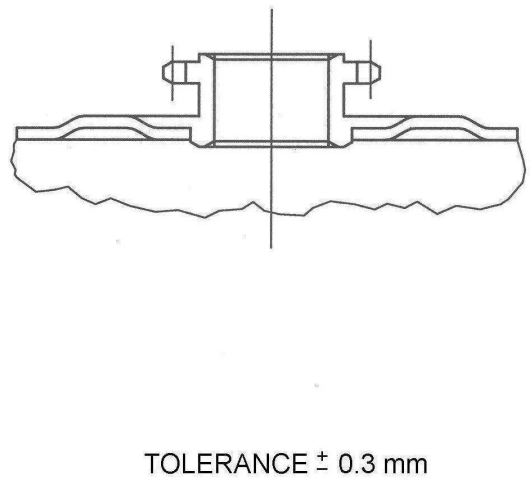
CLUTCH

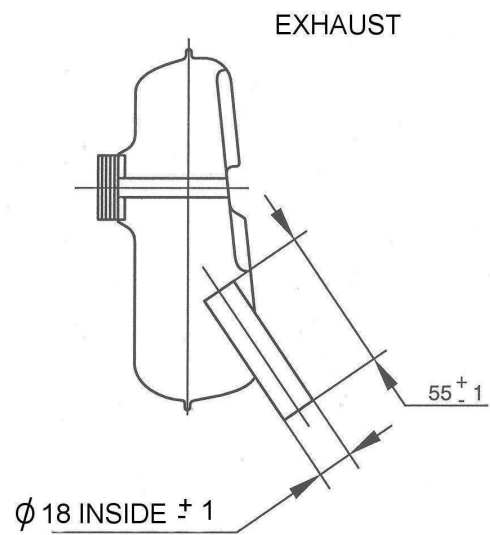


CLUTCH



COMER SPROCKET 11-12 TEETH PITCH





ELECTRONIC IGNITION

SELETTRA

RECOMENDED SPARK PLUGS:

BOSCH W2AS-W08AS

SPARK PLUG CAP

COMER ORIGINAL



Comer S.p.A.

Via Storchi, 8 Loc.S.Tomaso 42011
BAGNOLO IN PIANO (RE) ITALY
0522/955044 FAX 0522/955040
www.comer-topkart.it